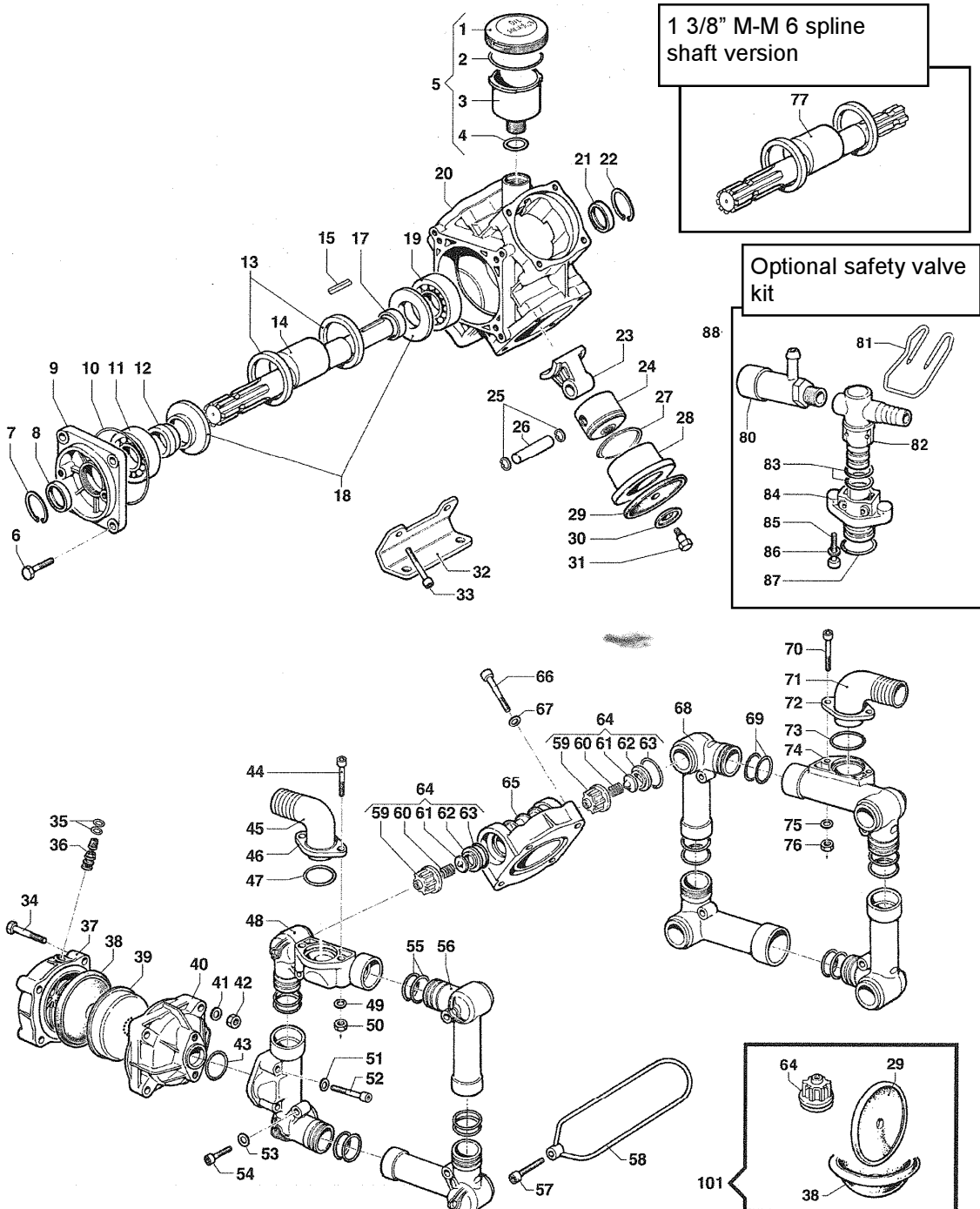




# BP151 / BP171

BP151/171



PRICES SUBJECT TO CHANGE WITHOUT NOTICE.

#	PART #	DESCRIPTION	NOTE	QTY
1	0402.0143.00	cap		1
2	1210.0373.00	O-RING	3,53x73,03	1
3	0421.0012.00	OIL CUP		1
4	1210.0002.00	O-RING	2,62x20,7	1
5	1208.0015.00	OIL CUP ASS'Y		1
6	3607.0220.00	HEXAGONAL SCREW	M10x30	4
7	3020.0009.00	RETAINING CLIP	47	1
8	0019.0083.00	OIL SEAL	35x47x7	1
9	0405.0067.00	SUPPORT COVER		1
10	1210.0345.00	O-RING	1,78x101,32	1
11	0438.0094.00	BALL BEARING	35X80x21	1
12	0601.0132.00	SPACER	35x48x18	1
13	0010.0020.00	CONNECTING ROD RING	80x68	2
14	0001.0412.00	THROUGHSHAFT	1"3/8-1"3/8	1
17	0601.0134.00	SPACER	35x44x10	1
18	2813.0036.00	CONNECTING ROD WASHER		2
19	0438.0094.00	BALL BEARING	35x80x21	1
20	0403.0118.00	PUMP CRANKCASE		1
21	0019.0083.00	OIL SEAL	35x47X7	1
22	3020.0009.00	RETAINING CLIP	47	1
23	0205.0038.00	CONNECTING ROD ASS.Y		1
24	2409.0081.00	BP171K PISTON	75	4
	2409.0096.00	BP151K PISTON	70	4
25	3020.0001.00	RETAINING CLIP	15	8
26	3011.0001.00	CONNECTING ROD PIN	15X53	4
27	0020.0009.00	BP171K COMPRESSION RING	75	4
	0020.0001.00	BP151K COMPRESSION RING	70	4
28	0400.0077.00	BP171K PISTON SLEEVE	75	4
	0400.0088.00	BP151K PISTON SLEEVE	70	4
29	1800.0002.00	DIAPHRAGM	BUNNA	4
	1800.0176.00	DIAPHRAGM	DESMOPAN	4
	1800.0032.00	DIAPHRAGM	VITON	4
30	0602.0045.00	DISC		4
31	3605.0005.00	DIAPHRAGM HOLDER SCREW	M12x1,5	4
32	2400.0064.00	PUMP MOUNTING BRACKET		2
33	3609.0192.00	SCREW	M10x50	4
34	3607.0223.00	HEXAGONAL SCREW	M10x65	4
35	1209.0033.00	GASKET	14x7,5x2	2
36	3610.0003.00	AIR VALVE		1
37	0003.0030.00	BP171K PULSATION DAMPNER	ORANGE	1
	0003.0015.00	BP151K PULSATION DAMPNER		1
38	1800.0034.00	DIAPHRAGM		1
39	0460.0036.00	DIAPHRAGM SUPPORT CAP		1
40	0002.0024.00	PRESSURE ACCUMULATOR		1
41	2811.0098.00	WASHER	10,5x18x2	4
42	0604.0105.00	NUT	M10	4
43	1210.0185.00	O-RING	4,0x38	1
44	3609.0156.00	SCREW	M8X55	2

#	PART #	DESCRIPTION	NOTE	QTY
45	2801.0032.00	ELBOW COUPLING	25	1
46	2404.0108.00	HOSE TAIL FIXING PLATE	3x29	1
47	1210.0180.00	O-RING		1
48	3214.0039.00	DELIVERY HOSE	8,4x15x1,6	2
49	2811.0099.00	WASHER	M8X55	4
50	0604.0107.00	NUT	8,4,x15x1,6	2
51	2811.0099.00	WASHER	M8x55	1
52	3609.0156.00	SCREW	8,4x15x1,6	2
53	2811.0099.00	WASHER	M8x40	4
54	3609.0162.00	SCREW	3,0x36	4
55	1210.0011.00	O-RING		8
56	3214.0038.00	DELIVERY HOSE	M10x40	2
57	3609.0163.00	SCREW		4
58	0418.0040.00	U-BOLT		4
59	1205.0034.00	SUCT./DELIV. VALVE CAGE		8
60	1802.0255.00	SPRING		8
61	3604.0009.00	SUCTION /DELIVERY HOSE		8
62	3009.0022.00	VALVE SEAT		8
63	1210.0419.00	O-RING	6x37x49	8
64	1220.0046.00	SUCT./DEL. VALVE ASS.Y KIT		8
65	3218.0123.00	PUMP MANIFOLD		4
66	3609.0192.00	SCREW	M10x50	12
67	2811.0098.00	WASHER	10,5x18x2	12
68	3214.0038.00	DELIVERY HOSE		3
69	1210.0011.00	O-RING	3,0x36	8
70	3609.0140.00	SCREW	M8x55 INOX	2
71	2801.0055.00	ELBOW COUPLING	40	1
72	2404.0108.00	HOSE TAIL FIXING PLATE		1
73	1210.0180.00	O-RING	3x29	1
74	3214.0039.00	DELIVERY HOSE		1
75	2811.0099.00	WASHER	8,4x15x1,6	4
76	0604.0107.00	NUT	M8	2

#	PART #	DESCRIPTION	NOTE	QTY
80	1219.0043.00	SAFETY VALVE		1
81	1202.0060.00	DELIVERY HOOK		1
82	2803.0356.00	SAFETY VALVE COUPLING	25 - G1/2"	1
83	1210.0002.00	O-RING	2,62x20,7	2
84	2803.0334.00	SPECIAL COUPLING		1
85	3609.0159.00	SCREW	M8x50	2
86	2811.0099.00	WASHER	8,4x15x1,6	2
87	1210.0180.00	O-RING	3,0x29	1
88	2803.0364.00	SAFETY VALVE KIT		1

#	PART #	DESCRIPTION	NOTE	QTY
101	5026.0145.00	ORDINARY MAINTENANCE KIT		1