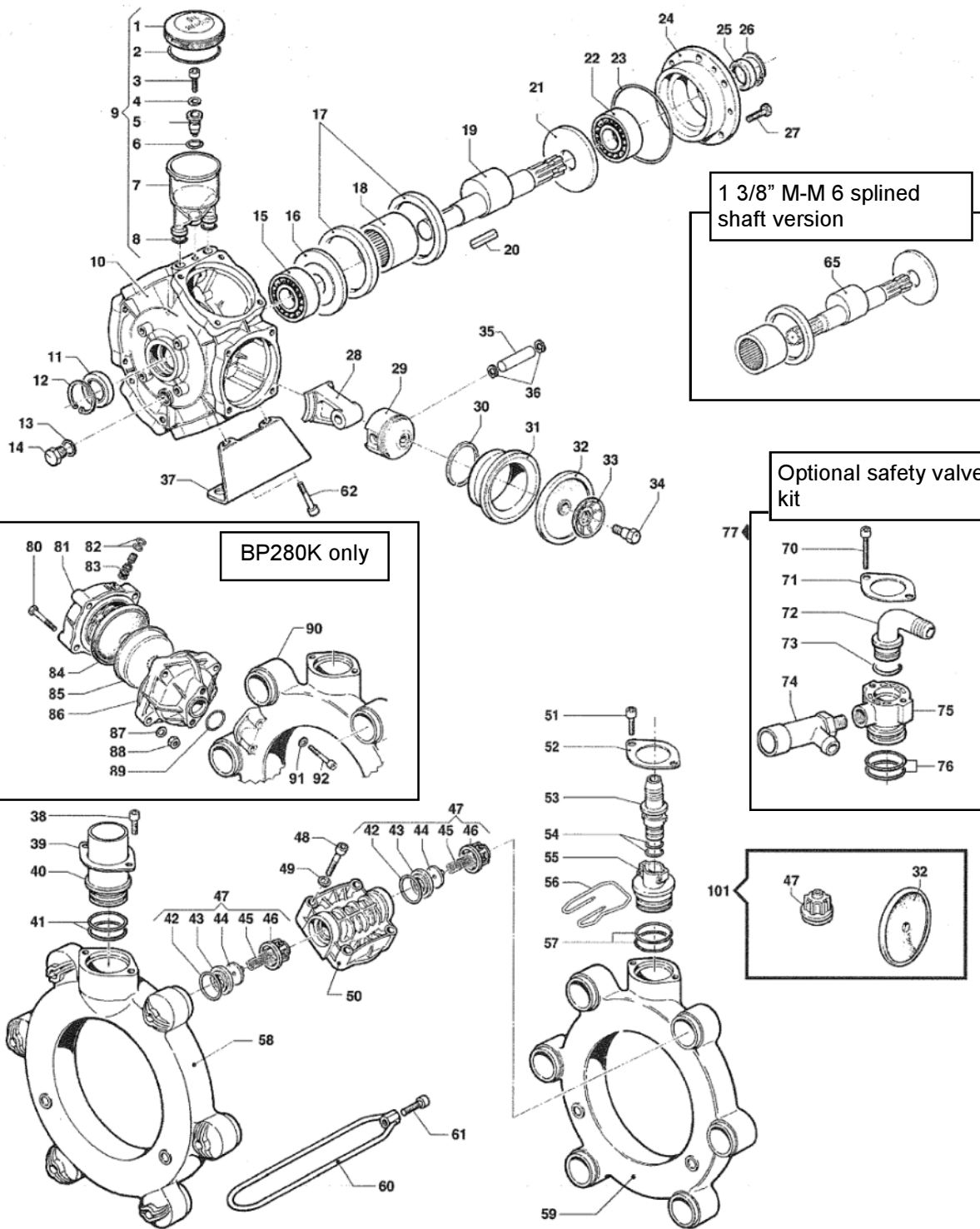




# BP205 / BP235

BP205/235



PRICES SUBJECT TO CHANGE WITHOUT NOTICE.

#	PART #	DESCRIPTION	NOTE	QTY
1	0402.0143.00	CAP		1
2	1210.0373.00	O-RING	3,53X73,03	1
3	3609.0009.00	SCREW	M10X35	1
4	2811.0050.00	WASHER	10,5x18x2	1
5	0601.0248.00	SPACER		1
6	1210.0093.00	O-RING	1,78x14	1
7	0421.0016.00	OIL CUP		1
8	1210.0046.00	O-RING	2,62x17,13	2
9	1208.0014.00	OIL CUP ASSEMBLY		1
10	0403.0144.00	PUMP CRANKCASE		1
11	0019.0091.00	OIL SEAL	35x52x10	1
12	3020.0013.00	RETAINING CLIP	52	1
13	1210.0209.00	GASKET	2,0x19	1
14	3200.0001.00	PLUG	22MB	1
15	0438.0012.00	280K BALL BEARING	35X80x21	1
	0438.0094.00	235K - 205K BALL BEARING	35x80x21	1
16	2813.0005.00	CONNECTING ROD WASHER	35,5x108x4	1
17	0010.0017.00	235K - 280K CONN ROD RING	109,5x93x10	2
	0010.0003.00	205K CONN ROD RING	109,5x93x10	2
18	0437.0080.00	ROLLER BEARING	60x78x40	1
19	0001.0088.00	235K - 280K THROUGHSHAFT	1"3/8-30 CIL.	1
	0001.0069.00	205K THROUGHSHAFT	1"3/8-30 CIL.	1
20	1602.0018.00	KEY	8x7x40	1
21	2813.0005.00	CONNECTING ROD WASHER	35,5x108x4	1
22	0438.0094.00	BALL BEARING	35X80x21	1
23	1210.0389.00	O-RING	1,78x107x67	1
24	0405.0020.00	SUPPORT COVER		1
25	0019.0083.00	OIL SEAL	35x47x7	1
26	3020.0009.00	RETAINING CLIP	47	1
27	3607.0225.00	HEXAGONAL SCREW	M10x20	6
28	0205.0067.00	CONNECTING ROD ASS.Y		2
29	2409.0081.00	280K PISTON	75	6
	2409.0096.00	235K - 205K PISTON	70	6
30	0020.0009.00	280K COMPRESSION RING	75	6
	0020.0001.00	235K - 205K PISTON RING	70	6
31	0400.0078.00	280K PISTON SLEEVE	75	6
	0400.0079.00	235K PISTON SLEEVE	70	6
	0400.0089.00	205K PISTON SLEEVE	70	6
32	1800.0002.00	DIAPHRAGM	BUNA	6
	1800.0176.00	DIAPHRAGM	DESMOPAN	6
	1800.0032.00	DIAPHRAGM	VITON	6
33	0602.0045.00	DISC.		6
34	3605.0005.00	DIAPHRAGM HOLDER SCREW	M12x1,5	6
35	3011.0001.00	CONNECTING ROD PIN	15x53	6
36	3020.0001.00	RETAINING CLIP	15	12

#	PART #	DESCRIPTION	NOTE	QTY
37	2400.0092.00	PUMP MOUNTING BRACKET		2
38	3609.0164.00	SCREW	M8x16	2
39	2404.0149.00	HOSE TAIL FIXING PLATE		1
40	2800.0038.00	280K STRAIGHT HOSE BARB	38x51 (2")	1
	2800.0022.00	235K - 205K STRAIGHT BARB	38x45	1
41	1210.0030.00	O-RING	3,53x39,69	2
42	1210.0419.00	O-RING	6x37x49	12
43	3009.0022.00	SUCT./DEL. VALVE SEAT		12
44	3604.0009.00	SUCTION/DELIVERY VALVE		12
45	1802.0245.00	235K SPRING		12
	1802.0255.00	205K - 280K SPRING		12
46	1205.0034.00	SUCT./DEL. VALVE CAGE		12
47	1220.0065.00	235K SUCT./DEL. VALVE		12
	1220.0046.00	205K - 280K SUCT./DEL. VALVE		12
48	3609.0161.00	SCREW	M10x45	20
49	2811.0098.00	WASHER	10,5x18x2	20
50	3218.0123.00	PUMP MANIFOLD		6
51	3609.0164.00	SCREW	M8x16	2
52	2404.0149.00	HOSE TAIL FIXING PLATE		1
53	2802.0014.00	DELIVERY HOSE TAIL	18,5x25,5	1
54	1210.0002.00	O-RING	2,62x20,7	2
55	2803.0151.00	DELIVERY HOSE TAIL		1
56	1202.0060.00	DELIVERY HOOK		1
57	1210.0030.00	O-RING	3,53x39,69	2
58	0415.0050.00	280K SUCTION MANIFOLD		1
	0415.0029.00	235K - 205K MANIFOLD		1
59	0415.0050.00	280K SUCTION MANIFOLD		1
	0415.0029.00	235K - 205K MANIFOLD		1
60	0418.0040.00	280K U-BOLT		6
	0418.0041.00	235K - 205K U-BOLT		6
61	3609.0163.00	SCREW	M10x40	6
62	3609.0161.00	SCREW	M10x45	4

#	PART #	DESCRIPTION	NOTE	QTY
65	0001.0092.00	235K - 280K THROUGHSHAFT	1"3/8M - M	1
	0001.0141.00	205K THROUGHSHAFT	1"3/8M - M	1

#	PART #	DESCRIPTION	NOTE	QTY
101	5026.0351.00	235K REBUILD KIT		1
	5026.0232.00	205K - 280K REBUILD KIT		1